

PROGRAM GUIDE

Plainville Adult and Continuing Education

Spring 2018

NEW *Classes for everyone!*



SCHOLARSHIPS

Customer Service and Sales
Certification Training Program
page 3

Also Featuring
Health Care Training
page 7

FREE

Adult High School Credit Diploma Program, Citizenship Preparation,
GED® Preparation, Adult Basic Education, and English as a Second Language

www.plainvilleschools.org

(860)793-3209

NEW! Many Moods of the Ocean

Farmington River School of Art-P. Bailey

What makes waves? How do you paint rocks? How about skies? Come to class and learn many ways to paint the ocean: different times of the day, quiet or stormy, rocks or no rocks, the personality of the ocean and so much more.

Thursdays March 8-April 26, 2018 1-3:30pm
8-sessions Minimum 10/Max. 12 Fee \$65

Materials list provided at the first session.

🚲 **off-site** Location: 73 E. Main Street, Plainville

NEW! Basic Loom Knitting

In this course you will learn the basics of loom knitting.

We will work on one basic project: making a scarf. Students will need to bring 2 skeins of yarn (180 yds.) of their choice.

Looms, hooks, & needles will be provided at no extra cost.

Leanne Butler Thursdays, May 10 & 17, 2018 5-7pm

2-sessions Minimum 4/Max. 8 Rm 117 Fee: \$50

NEW! Basic Counted Cross Stitch

In this course you will learn the basics of counted cross stitch. We will complete one basic project including mounting and framing. Everything needed will be supplied for you and is included in the cost.

Leanne Butler Thursdays, April 19 & 26, 2018 5-7pm

2-sessions Minimum 4/Max. 8 Rm 117 Fee: \$50

NEW! Spring Fresh or Dry Arrangement

Design either a fresh flower or dried flower arrangement in a glass rose (fish) bowl, just in time for Spring and Mother's Day! Please specify "fresh" or "dried" flowers on the registration form. Materials included.

Amy Oved Tuesday, May 8, 2018 5:30-7pm

1-session Minimum: 4/Max. 12 Rm 125 Fee: \$50

Please bring scissors & clippers if you have them.

Balloon Twisting (FREE Balloon Kit)

Welcome to the magical world of twisting balloons. In this class, I, the Amazing Magical Paul, will teach you the basics of how to twist and shape your own balloon animals. We will start small and work our way up to mid-level balloons, so you can impress your friends and family.

Paul Kilmer Wednesday, May 2, 2018 5-6:30pm

1-session Minimum 4/Max. 10 Rm 123 Fee: \$35

The Joys & Benefits of Essential Oils

Participants will receive an overview of the history and uses of essential oils. Learn how to choose quality products, and what oils can be used for, such as: practical recipes, beauty, cleaning, and more. Discover how oils can positively impact your daily living. Each participant will create a "Make & Take" essential oil product to bring home.

C. Coughlin Thursday, April 26, 2018 5:30-7:30pm

1-session Minimum 4/Max. 12 Fee: \$15

🚲 **off-site:** Plainville Public Library, auditorium

NEW! The Great Depression and The Modern American Government

The course will examine the Federal Government's response to the Great Depression and how this response changed the relationship of government to the states and the people.

Bruce MacInnis Mondays, March 5-19, 2018 5:30-7pm

3-sessions Minimum 4/Max. 10 Rm 123 Fee: \$50

NEW! The Bobcat: Connecticut's Secretive Wild Cat

This fascinating presentation will focus on the natural history of bobcats in Connecticut, an overview of bobcat habitat, diet, behavior, reproduction, and current research efforts. Bobcat artifacts will be shared with the audience. In addition, mountain lions will be discussed. Bring your questions.

Paul Colburn Thursday, May 3, 2018 6-8pm

1-session Minimum 10/Max. 35 Rm 123 Fee: \$5

NEW! The American Civil War: Causes and Effects

Explore the reasons why the war happened, changes in motivation during the war, and lasting changes that continue to affect us today.

Bruce MacInnis Mondays, April 16-30, 2018 5:30-7pm

3-sessions Minimum 4/Max. 10 Rm 123 Fee: \$50

Zumba with Stacie

Every class feels like a party! Come join me to see what I mean. You don't have to know how to dance. Just move your body and follow my lead. Come try it. I guarantee you will have a blast while burning calories. I've been a Zumba instructor for 10+ years and I am certified in Group Fitness & Adult CPR/AED. - S. Silva-Gordon. Wear comfortable clothes and sneakers. Bring a towel and water.

Wednesdays & Fridays March 14 - May 4, 2018 6-7pm

12 sessions Minimum 12/Max. 30 Fee: \$65

🚲 **off-site:** Middle School of Plainville, small gym

150 Northwest Drive, Plainville

Tai Chi for Health

Focus on the practice of Tai Chi for Health and Fitness. The goal is to quiet the mind, relax the body, and improve health. Sessions will cover: Fundamentals of Practice, Qigong Stretching, Qigong for health, and Forms Practice.

Mondays March 12-May 7, 2018 6:30-7:15pm

8-sessions Minimum 10/Max. 25 Fee: \$65

🚲 **off-site:** Middle School of Plainville, small gym

150 Northwest Drive, Plainville

R. Godin is a Certified Health Preservation Association Instructor who has been trained by Grandmaster Jianye Jiang in Taiji, Qigong for Arthritis, Qigong for Diabetes, and Medical Qigong.

Did you know?

Over 100 students benefited from the **FREE** mandated programs last year. The Credit Diploma Program may be customized to fit your unique needs. Take a look at page 5, and then give us a call: (860) 793-3209.

NEW!

Understanding Your Unique Personality Type

Are you curious about how your personality affects your behavior? Would you like to learn more about what makes you--you? Join us to explore personality type indicators, and gain an in-depth understanding of your personality traits. *Great tool for identifying employment preferences.*

M. Smith Fridays, April 20 & 27, 2018 5-7pm
2-sessions Minimum 4/Max. 10 Rm 126 Fee: \$35

NEW! Tax Free in Retirement

Learn about strategies that can help you get closer to a tax free retirement. Discover how you can safely build a tax favored position in retirement using methods that have been around for over 150 years. Topics include: taxable IRA, distribution timing, Tax Bridge, tax free vehicles, tax bucket, Roth IRA, 72T distribution, deductions, and heirs.

Michael Alimo Monday, March 26, 2018 5:30-7pm
1-session Minimum 1/Max. 25 Rm 121 Fee: \$5

Computer Skills for Beginners

No experience required. In just one session, learn the basics. Discover computer parts and keyboard functions. Learn how to open, save, and print documents. Access the internet and email. Get your questions answered.

Andy Davis Monday, May 7, 2018 5-7pm
1-session Minimum 6/Max. 12 Rm 126 Fee: \$35

Foundations of Excel

Understand spreadsheet software. Utilize formulas, design charts, format spreadsheets, and learn to filter & sort data.

Andy Davis Mondays, May 14 & 21, 2018 5-7pm
2-sessions Minimum 6/Max. 12 Rm 126 Fee: \$55

How Money Works

Do you know the Rule of 72? Do you know the difference between fixed debt and revolving debt? Roth IRA vs. Traditional IRA? What life insurance is best? Do you know the three legged stool theory for investing? Learn all this & more! *"How Money Works"* book--provided free of charge.

Gene Callahan Monday, April 30, 2018 5:30-7pm
1-session Minimum 3/Max. 20 Rm 121 Fee: \$10

Life Planning FOR CHILDREN WITH SPECIAL NEEDS

This educational workshop will help families through the maze of financial complexities surrounding planning for the future of children and other dependents with special needs. We will discuss the importance of coordinating all documents including a special needs trust, letter of intent, guardianship and various funding options for the special needs trust.

Presenter: Leonard Del Gallo Jr., M.S., MPASsm, CFP®
Wednesday March 14, 2018 5-7 pm
1-session Minimum 3/Max. 30 Rm 123 Fee: \$15



Customer Service and Sales Certification Training Program

Prepares students to take the National Retail Federation (NRF) Basic and Advanced Customer Service and Sales Certifications exams. Students with NRF Certification demonstrate knowledge and skills in areas that employers value, like the economics of retail, meeting customer needs, closing sales, and much more.

Includes: 48 hours of instruction, textbook, materials

Schedule:

March 23, 2018 - June 16, 2018
Fridays 5:30pm-7:30pm, Plainville High School and
Saturdays 10:15am-12:15pm, Plainville Public Library
Minimum: 15 Maximum: 20
Instructor: Marta Cruz

Tuition: \$352 (No Senior Discount)
Tuition with Plainville Community Fund Scholarship: \$0

Call today for a scholarship application:
(860) 793-3209 /Registration Deadline: March 10, 2018

Information:

This program is available for those ages 16 and over and open to all regardless of residency. A diploma is not required to participate. Course Maximum is set at 20. Needs-based scholarships are available for a limited number of Plainville residents, supported by The Plainville Community Fund II at the Main Street Community Foundation.



Become A Certified Nurse's Aide

- C.G. Nursing Services, LLC is offering the most extensive Certified Nurse's Aide Program in Farmington Valley.
- The curriculum is approved by the Department of Health and the Office of Higher Education.
- The course is a 135-hour program.

The Day Program:

Monday-Friday 8:00am-5:00pm

- Runs for three consecutive weeks
- 90 hours of combined classroom and supervised labs, 45 hours of clinical experience.

The Evening Program

Monday-Thursday 5:00pm-10:00pm

- Runs for seven consecutive weeks
- 90 hours of combined classroom and supervised labs, 45 hours of clinical experience.

3 Forest Park Drive, 1st Floor, Farmington, CT 860-255-7723(t)



Pierrette Plourde was a beloved Plainville resident who demonstrated and prioritized kindness in her relationships with her close-knit family and large circle of friends. In the spirit of her generous and sweet nature, the Plourde family has donated Pierrette's quality clothing, shoes, and accessories to Plainville Adult Education students, who may be in need of appropriate interview and career attire.

"Pierrette's Closet" is an on-site resource, perpetually projecting goodwill, while equipping visitors (who, like Pierrette, may have put the needs of others before themselves) with outfits, inspiring confidence and success.

ARE YOU READY FOR THE GED TEST?
Take a GED Ready™ official practice test, immediately followed by a results analysis and counseling appointment, free of charge!

Date: Thursday, February 1, 2018

Time: 5:30PM-6:30PM

Place: Plainville High School

Call: (860) 793-3209 (to reserve)

[Reservation Required by 1-30-18](#)

English as a Second Language (ESL)

This Program is designed to assist students in a multi-level group atmosphere. With students who have little or no fluency in English, attention is given to learning the basic English skills that permit increased self-reliance in speaking the language. Students with this base knowledge increase fluency in speaking, reading, and writing. In addition, language structure, grammar, and punctuation are stressed. **No Cost**

Instructor: M. Smith, Plainville High School, Room 225

Mondays through Thursdays, 5-7pm

Spring Semester: February 5 - May 17, 2018

Citizenship Preparation

This is a competency-based program of instruction for immigrants who wish to become American citizens. This program assists those who would like help in preparing for oral or written citizenship tests; sample test questions will be available. Classes provide knowledge of American history, the U.S. Constitution, rights of citizens, and the structure and function of national, state, and local government. **No Cost**

Instructor: F. Bogdan, Plainville High, Room 123

Mondays, 4-6pm

Spring Semester: February 5 - May 7, 2018

Adult Basic Education (ABE)

ABE is a competency based program of instruction for native or foreign-born English speaking adult students who need to develop fundamental skills. ABE offers structured practice in reading and English to survive in today's world, with communication stressed. Students will strengthen consumer and employability skills, as they are instructed in mastering basic operations of addition, subtraction, multiplication, and division using whole numbers, fractions, decimals, percents, and setting up numbers to solve problems. ABE may serve as a transition to diploma programs. **No Cost**

Instructor: M. Bresnahan, Plainville High School, Rm 223

Mondays through Thursdays, 5-7pm (Math Power 4-5pm)

Spring Semester: February 5 - May 17, 2018

Adult Basic Education (PARC 101)

Develop skills for independent living, including safety measures. Students improve communication skills (conversation and telephone skills), basic consumer skills, (money, time, information) and functional reading skills. **No Cost**

Instructor: L. Butler, Plainville High, Room 117

Mondays, 5-6:30pm

Spring Semester: February 5 - May 7, 2018

3 Ways to Earn a Diploma

Adult High School Credit Diploma Program

Earn credits for a high school diploma by taking courses at PHS, plus transfer credits from any former schools. Experience in the military, community, home, or work may also qualify for up to five credits. Twenty two credits are required to graduate in specific subject areas. Students are goal orientated and self motivated. **No Cost. Enroll Today! (860) 793-3209.**

GED® General Educational Development Preparation

Prepares adult learners to pass the 4-part, computer-based GED® exam to earn a State of Connecticut diploma.

Students receive instruction in each of four subject areas – science, social studies, math and language arts – plus basic computer skills to take the exam. Instructors will also review the official website, ged.com, where students can access related exam information and exam registration procedures.

M. Bresnahan, E. Bosley, J. Czerwinski, Plainville High School

Mondays- Thursdays, 5-7pm Room 223 (Math Power 4-5pm)

Spring Semester: February 5 - May 17, 2018 No Cost.

National External Diploma Program (NEDP)

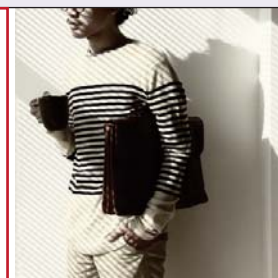
Designed for adults who have gained skills through life experiences and have demonstrated competence in a particular job, talent, or academic area. This self-paced program does not require classes. Alternatively, it provides a self-paced, one-on-one experience with a trained NEDP Assessor/Advisor, providing flexible meetings by appointment, to demonstrate complete mastery of skills. Program completion can vary, but averages six months to a year. *Federally funded by a grant in partnership with Bristol Adult Ed., the NEDP is a nationally certified program.* **Call (860) 793-3209. No Cost**

Accommodations for the GED® test are available for qualified individuals with a disability. For more information, contact Jill O'Brien, (860) 793-3209. You may also contact Sabrina Mancini at the CT State Department of Education at (860) 807-2110.

Traveling Teacher

customized programs
delivered to your business

860.793.3209



Call Today!
(860) 793-3209



MORNING ADULT EDUCATION CLASSES (including on-site childcare at no cost)

GED® Preparation, English as a Second Language, Adult Basic Education, Computer Lab, Lending Library, Museum Passes, eReaders, Career Exploration, Parent Education, and more!

Plainville Family Resource Network at Linden Street School

Rolling Enrollment: Begins February 5, 2018

Mondays, Tuesdays, & Wednesdays 9 -11a.m.

ESL Family Language Lab: Wednesdays 11a.m. - Noon

Available through a federally funded grant in partnership with PFRN & Plainville Adult Education

*Celebrating 20 Years of Learning
and Growing with Plainville
Families. Building the Bridge
Between Home and School.*

Like Us on Facebook



Linden Street School
69 Linden Street
Plainville, CT 06062

Phone (860) 793-6304
Fax (860) 793-3269

The mission of Plainville Family Resource Network (PFRN) is to deliver nurturing multi-dimensional programs and services for all families, all children. Support provided by PFRN helps build strong home-school-community partnerships, healthy thriving families, and children who are ready to learn. PFRN provides high-quality educational experiences through age-appropriate fun activities, laying the foundation for future school success. Connecticut's Early Learning and Development Standards (CT ELDS) are used to guide lesson preparation to ensure the children are receiving the necessary knowledge and learning opportunities during the earliest years of development. Programs are designed for children birth through elementary school age as well as programs for parents, childcare providers, and relatives providing care for their family members.

Play & Learn Groups

"PLAY IS THE WORK OF CHILDREN"

Parent and child interactive Play & Learn Groups focus on early literacy and the social skills necessary for children to be successful in school. Through a combination of free play, age appropriate activities, and gently structured storytimes, children's love of learning and all areas of development are strengthened. Groups are held at Linden St. School Mon., Tues., & Wed. mornings 9:30-11:00am. Also, an evening group is available Mon. 6-7:15pm. All Plainville children birth to age 5 are welcome to attend with a parent, grandparent, or care provider. Call Donna Cavallaro(860)793-6304.

Evening Play & Learn Group for Working Parents

Enjoy a special evening focused on quality time with your child while meeting with other Plainville families. Creative play and storytime included. Each Monday while school is in session, 6-7:15pm. Older siblings are welcome to join the fun!

Parents as Teachers

Parents as Teachers (PAT) program provides education and support to families, childcare providers, and relative care providers who have children ages pregnancy through 5. They are supported by PAT, certified parent educators trained to translate scientific research on early brain development into specific when, what, how, and why information for families. By understanding what to expect during each stage of development, you can easily capture the teachable moments in everyday life to enhance their child's language development, intellectual growth, social development, and motor skills. Home and personal visits available to meet the individual needs of each family or provider. Call the PFRN to schedule your first visit: (860) 793-6304.

Fifth Annual Family Fest

Saturday, May 19, 2018

Join us for a free admission day of fun family activities and entertainment to be held at Linden Street School 10:30 – 3:30pm. For more information contact PFRN.

www.plainvillefamilyfest.net



Adult Education Program Includes Cost-free Childcare

- GED® Preparation
- English as a Second Language
- Adult Basic Education

Featuring:

- Computer Literacy
- Financial Literacy
- Lending Library and eReaders
- Museum Passes
- Career & Education Exploration
- School Counseling Support

Schedule:

February 5-May 23, 2018
Mondays, Tuesdays, Wednesdays
9am -11am
ESL Family Language Lab
Wednesdays 11am-Noon
~ Rolling Enrollment ~

Call Today
(860) 793-3209

Available through a federally funded grant in partnership with PFRN & Plainville Adult Ed.

- clases de educacion para adultos registrese hoy (860) 793-3209
- preparacion de la ciudadania
- educacion basica para adultos
- preparacion para el GED®
- ingles como segundo idioma

Raising Readers Parent Book Club

Discover fun new ideas for exploring books with your child while adding to your home library. Childcare provided during club meetings. Tuesdays February to April 11:10 - 12:10pm. Call PFRN to register or for more information 860-793-6304.

Summer Play & Learn Groups

It's a "Sea" World Summer! Daytime groups for families to make a splash with fun opportunities for learning with an ocean theme. Tues. & Thurs. 9:30–11:00am. Contact PFRN for more information about two "Evening In The Park," family gathering/storytelling events.

Child Care Providers

PFRN offers support to child care providers and relatives who care for young members of their extended families. Services include: professional development opportunities, lending library, field trips, resources/referrals for providers and their families. Care providers also have the opportunity to participate in the nationally renowned, "Parents As Teachers" program, with materials and resources for families. For those interested, call PFRN for guidance in learning the steps necessary to earn a Child Development Associate (CDA) Credential.

Preschool Developmental Screenings

Provided by Plainville Community Schools, this program is a developmental screen for Plainville children aged three to five, and will be held in September, December, March, and May. Your child will be observed in an informal fun atmosphere by a professional Early Childhood Team to ensure development is progressing smoothly. For additional info. contact your neighborhood school.

PreK Program for 4 year olds

Plainville Community Schools Preschool program is seeking Plainville students who will be 4 by January 1, 2018. The program will run 5 full days a week and will be offered at each of our three elementary schools. Transportation will be provided to and from students' homes and/or Plainville childcare providers. There will be a family fee (the exact cost to be determined by February, 2018) and a sliding scale fee will also be available. Contact your home school for more information.

HEALTH CARE TRAINING AT PHS

Pharmacy Technician

Prepare to work in a pharmacy setting and to take the Pharmacy Technician Certification Board's PTCB exam. Includes lecture/hands-on labs, and a local clinical rotation. **WIOA APPROVED**

\$1,199 NO SENIOR DISCOUNT

March 6 - May 8, 2018

Tues. & Thurs. / 4-7pm / Minimum: 4

Clinical Medical Assistant

Students will be trained to assist physicians by performing functions related to the clinical responsibilities of a medical office. **WIOA APPROVED**

\$2,599 NO SENIOR DISCOUNT

March 5 - June 4, 2018

Mon. - Thurs. / 4-7pm / Minimum: 4

Medical Billing and Coding

Obtain the skills needed to solve insurance billing problems, how to manually file claims, complete common insurance forms, trace delinquent claims, appeal denied claims and use generic forms to streamline billing procedures.

WIOA APPROVED

\$1,899 NO SENIOR DISCOUNT

March 5 - June 18, 2018

Mon. & Wed. / 4-7pm / Minimum: 4

Veterinary Assistant

Covers interaction with clients and their animals, interpersonal communications, administrative duties, and how to assist the veterinarian during examinations.

Includes hands-on labs.

\$1,899 NO SENIOR DISCOUNT

March 5 - May 30, 2018

Mon., Wed., Thurs. / 4-7pm / Minimum: 4

(Registration period closes 2-weeks before start date.)

MATH AND ENGLISH REFRESHERS

The Fast Track to Success. Whether searching for a new job or just treading water in your current job, we can help! Brush up on the basics, impress your boss, keep your job, and shake hands with success.

Prerequisite: High School Diploma

MATH

M,T,W,TH March 12-15, 2018

ENGLISH

M,T,W,TH April 2-5, 2018

M. Bresnahan 3-4pm Room 223

Minimum: 10 Maximum: 35

(CERTIFICATE ISSUED)

Fee Per Subject: \$55



Currently, we will accept credit/debit cards payments online: http://www.plainvilleschools.org/departments/adult_ed/registration
We do not accept credit card payments over the phone or in-person. The (non-refundable) convenience fee when using a credit card is a percentage rate fee, of 3.95%. If a course cancels, this convenience fee will not be refunded.
Please Note: No convenience fees will be charged for payments made via check, money order, or cash, using the Registration Form below.

PLAINVILLE ADULT EDUCATION Registration Form - Spring 2018

Name _____
Address _____
City/Zip _____
Phone _____
email _____

_____ Indicate if you are a Plainville Resident Senior Citizen (62 and over) then deduct 30% off of the advertised fee for any **one** program. Please Note: this discount does not apply to courses with "NO SENIOR DISCOUNT" specified in course descriptions, or to Health Care Training.

Course _____	Fee \$ _____
Course _____	Fee \$ _____
Course _____	Fee \$ _____
Course _____	Fee \$ _____
TOTAL ENCLOSED	\$ _____

YOUR suggestion for a new course _____

Thank you for making your check payable to:
PLAINVILLE ADULT EDUCATION
Please photo copy as needed, mail form(s) with tuition to:
Plainville Adult and Continuing Education
47 Robert Holcomb Way Plainville, CT 06062

The instructors are hired to teach general concepts, not to provide specific advice to individuals. You should consult your own medical advisors before making any decisions based on examples used by instructors. All of our physical education courses may be strenuous. Therefore, consult a physician before enrolling. By enrolling in these courses you indicate that you have no physical condition that would make participation hazardous to your health.

INFORMATION: Enrichment Program Policy: Courses are offered on a self-sustaining basis. If the enrollment is insufficient to cover the cost of the course, the course will be canceled and the fees received will be refunded. Allow 6-weeks for processing refunds. No registration confirmation will be mailed to you. Unless notified the contrary, assume that you are enrolled and your class will run as scheduled. In the event of a filled class or cancelation, every attempt will be made to notify you. **Refund Policy:** A full refund is given only when Adult Ed. cancels a course. Regrettably, no other refund requests can be honored. Please allow 6 weeks for processing. No refunds once classes have started. **Supplies/Materials:** may be required for some classes. **Room Assignments:** May be subject to change. **Certificates of Achievement:** Will be presented to all participants upon request. **Bad Weather Policy:** If the day school is cancelled, all continuing education classes are postponed to a later date. If an afternoon storm develops, check www.ctweather.com for official notices. **Location:** Classes are held at Plainville High School unless otherwise noted. **Who May Enroll:** Residents and Nonresidents ages 16 + unless otherwise indicated / Mandated Programs ages 17+ **Instructors:** Are certified teachers or other members of the community with special areas of expertise that they are qualified to share.
If you have course ideas or would like to join the faculty, please call (860) 793-3209.

Plainville Adult Education is in compliance with Connecticut General Statutes Sec.10-73a and does not charge fees for registration, textbooks or materials used in mandated program areas.

General Accessibility and Accommodation All activities offered by Plainville Adult Education are held in accessible locations. Accommodations for individuals with a disability are available upon request. Please contact Martha Smith (860) 793-3209

Plainville Adult Education is committed to a policy of equal opportunity/affirmative action for all qualified persons and does not discriminate in any employment practice, education program, or educational activity on the basis of race, color, religious creed, sex, age, national origin, ancestry, marital status, sexual orientation, gender identity or expression, disability (including, but not limited to, intellectual disability, past or present history of mental disorder, physical disability or learning disability), genetic information, or any other basis prohibited by Connecticut state and/or federal nondiscrimination laws. Inquiries regarding Plainville Adult Education's nondiscrimination policies should be directed to Jill O'Brien (860) 793-3209

For additional program information, contact:

Jill O'Brien, Coordinator-Plainville Adult & Continuing Education
47 Robert Holcomb Way Plainville, CT 06062

860.793.3209

obrienj@plainvilleschools.org

Plainville Adult and Continuing Education
47 Robert Holcomb Way
Plainville, CT 06062
(860) 793-3209

LEARN2EARN
CONNECTICUT ADULT EDUCATION: The Pathway to Lifelong Learning
Like Us: www.facebook.com/learn2earnCT



NON-PROFIT
ORGANIZATION
U.S. POSTAGE
PAID
PERMIT # 416
FARMINGTON, CT
06032

Follow us on Twitter @PlainvilleAE
LARGE PRINT AVAILABLE

Dr. Maureen Brummett, Superintendent of Schools

Sponsored by the Plainville Board of Education:

Michael Giuliano, Deborah Hardy, Nicole Palmieri, Laurie Peterson,

Andrea Saunders, Crystal St. Lawrence, Becky Tyrrell, Kathleen Wells, Foster White

PIZZA, A MINI-SERIES, AND A HISTORY LESSON *at the Plainville Public Library*

Band of Brothers

Chronicles experiences from paratrooper training in Georgia through the end of the war. As an elite rifle company parachuting into Normandy early on D-Day morning, participants in the Battle of the Bulge, and witness to the horrors of war, the men of Easy knew extraordinary bravery and extraordinary fear -- and became the stuff of legend. (HBO.com)

Due to content, those under age 18 will be asked to be accompanied by a parent.

Saturdays: March 3, 10, 17, 31

Time: Noon-3:15pm

Cost: FREE, including lunch

Register: Call (860) 793-3209 by 2/28/18

*This Adult Education Program is supported by a grant award from
The Elizabeth H. Norton Trust Fund*

